

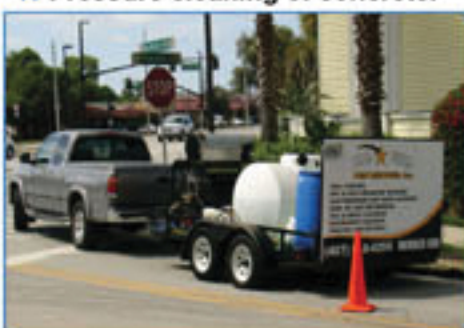
Pest Management Solutions

- ★ Bed bug heat treatments and chemical treatments
- ★ German Roach Control : This includes using specialized equipment to knock out a severe infestation very quickly.
- ★ Inside and outside flea treatments.
- ★ Wasp treatment and removal even in high areas
- ★ Rodent services including sealing of entry areas.
- ★ Honey bee removal
- ★ Wild life services
- ★ And much more



Painting & Pressure Cleaning

- ★ Apartment and hotel painting. We specialize in apartment communities and do quality work at an extremely affordable price.
- ★ Low pressure chemical cleaning of buildings and roofs. Makes a building or roof look like new.
- ★ Low pressure fence and vinyl siding cleaning.
- ★ Pressure cleaning of concrete.



Another Happy Customer!

The Ronald McDonald House



Commercial
Residential
Exterior
Interior

Bed Bug Heat Remediation
With Optional HEPA Cleaning

General Landscaping Areas

Multifamily Monthly Oversight

Green, Eco-Friendly Products Available



Apartment Association
Of Greater Orlando



Pest Management Solutions

BED BUG HEAT REMEDIATION SERVICES

407.816.4295

Serving The Greater Orlando Area

www.orlandobedbugheat.com

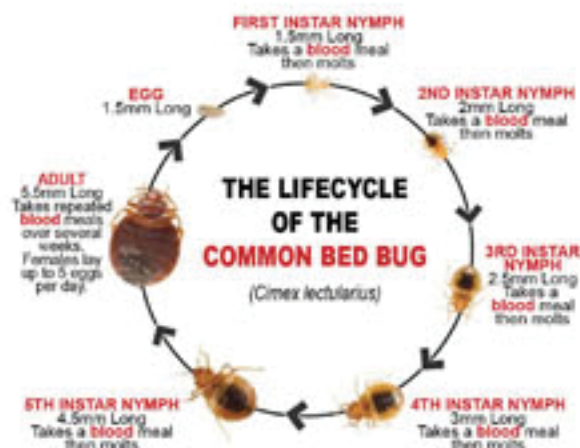
ABOUT Bed Bugs



Bed bugs have become increasingly resistant to chemicals. Thus, many eradication efforts require multiple treatments and ultimately prove fruitless. Using heat has been repeatedly proven to kill bed bugs and their eggs in all developmental stages.

All Star Services, Inc. has a system that is quick, effective, and gets the space back to your hands in one day. All Star Services combines Heat with Chemicals to provide total protection.

Our equipment has Virtually Silent Operation with No Signs on our vehicles and equipment. Our equipment can treat an entire Home at once, 2 Apartments or 6 Hotel rooms simultaneously.



Affordable Bed Bug Detection Services

We use **Verifi Bed Bug Detectors** as part of an integrated detection approach. These units were developed by FMC Professional Solutions. The Verifi Bed Bug Detector utilizes attractants to continuously draw in and detect bed bugs for up to 90 days.

The Verifi Bed Bug Detector has been designed to exploit bed bug biology and behavior in order to attract and detect both host-seeking bed bugs and aggregation-seeking bed bugs.

Inside Look:

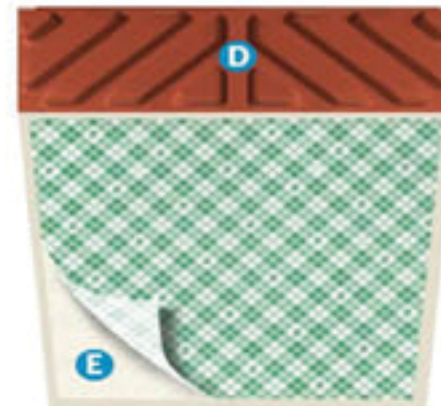
A. The replaceable Verifi CO2 booster pack mimics a living, breathing host for about 24 hours using an exclusive chemical reaction to generate carbon dioxide. This reaction starts upon activation and requires no batteries or other power source.

B. The replaceable Verifi lure features two additional attractants: a kairomone, to attract bed bugs seeking a meal, and a pheromone that encourages bed bugs to aggregate in the harborage area of the device. Consistent amounts of these attractants are continuously emitted for up to 90 days.

These attractants are segregated within the device to prevent confusion of the bed bugs.

The CO2 and kairomone attract host-seeking bed bugs to the pitfall of the device, while the pheromone attracts aggregation-seeking bed bugs to the harborage area. This helps make Verifi one of the most effective and irresistible detectors on the market.

C. Bed bugs fall into the pitfall and are unable to climb out, ensuring the pests can't escape detection. Tiny holes at the bottom of the pitfall allow attractants to be emitted but prevent any small nymphs from slipping into the device.



D. A harborage area on the back of the detector encourages bed bugs to gather so that bed bugs, cast skins, eggs and other visual evidence can be observed, signifying an infestation.

E. A self-adhesive sticker allows the detector to be installed without tools.

